



# **Metal Shapes Company**

Pre-Qualification Document

22/3/2025



## نبذة عنا

تفتخر شركة الاشكال المعدنية للمقاولات بأنها من بين أفضل الشركات في الأعمال المعدنية والطلاء الكهربائي المكمل لها حيث تقدم العديد من الخدمات على مستوى عالي من الجودة والحرفية لتتنقل بذلك الخبرة والتقنية الأوروبية لتضعها بين يدي العميل لتنال ثقته ورضاه ولتبرز قدرتها على ترجمة وتحقيق الأفكار الإبداعية والتصاميم الفنية على أرض الواقع

## About us

Metal Shapes Contracting Company is proud to be among the best companies in metal works and electroplating complementary to it, as it provides many services at a high level of quality and craftsmanship to transfer European experience and technology to put it in the hands of the customer to gain his trust and satisfaction and to highlight its ability to translate and achieve creative ideas and artistic designs on the ground





تم إنشاء الشركة منذ عام 2000 بناءً على الخبرة الأوروبية لكوادر المؤسسة المتخصصة في مجال طلاء المعادن وتصميم وتصنيع الثريات والأعمال المعدنية الخاصة. هذه الخبرات مكتسبة من قبل شركة ألمانية وشركة إسبانية أخرى وهما من أقدم الشركات في ألمانيا يعود تاريخهما إلى عام 1919 م بالإضافة إلى استخدام التقنيات الحديثة في تصنيع ورسم الأجزاء المختلفة وتميزنا كان نتيجة التخصص و الإلتقان في مجال زخرفة المعادن مع إدخال تقنيات الطلاء الكهربائي الحديثة بالإضافة إلى لمسات تقنية احترافية تضاهي الصناعة الأوروبية الشهيرة ومن داخل المملكة العربية السعودية.

## Incorporation

The facility was established since 2000 based on the European expertise of the establishment's cadres, which are specialized in the field of coating Metals, design and manufacture of chandeliers and special metalwork. These experiences are acquired by a German company And another Spanish company, two of the oldest companies in Germany, dating back to the year 1919 AD in addition to use Modern techniques in manufacturing and painting different parts, and our distinction was the result of specialization and perfection in the field of metal decoration With the introduction of modern electroplating techniques with professional technical touches comparable to the famous European industry and from within the Kingdom Saudi Arabia.

**للتواصل**

---

## **Contact Us**

**Kingdom of Saudi Arabia - Jeddah - Al-Sharafiya neighborhood - Madinah Al-Talaa road - Al-Hayat commercial center**

**BO.BOX 11850 - Postal code 21312 - Tel: 012 664 0864 - 012 6140401 - Mob: +966 55 663 1163 - +966 50 468 8815**

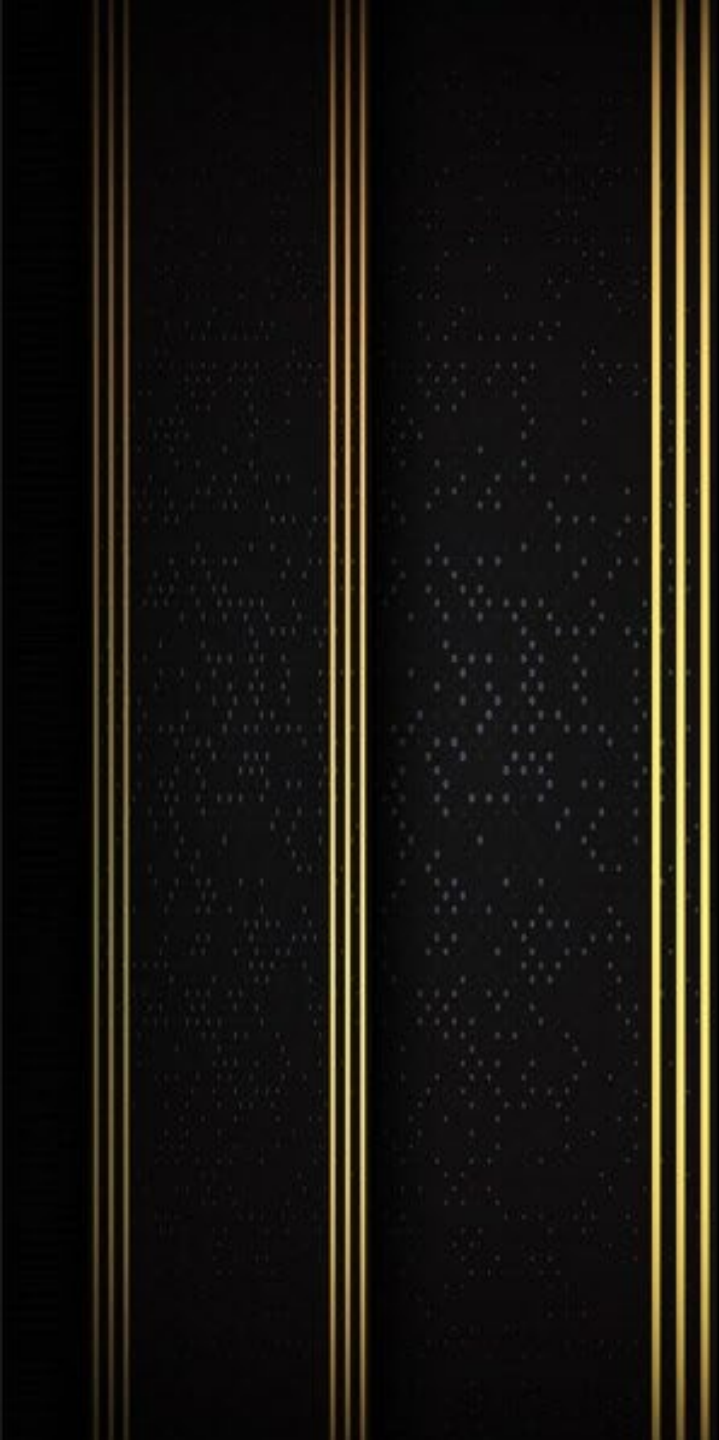
**+966 55 627 5500 - Web: [www.metalshapes.art](http://www.metalshapes.art)**

# King khaled Airport

Duty free

FIRST FIX































# Duble Three by hilton

Makkah - jabal omar

ACC









# Cartier

## Ksa - jeddah

DARMA – POLVARINI















**King Abdulaziz Airport & King Fahd Airport**

**VIP Lounge**

**GOLDEN SULTION – BENLADEN-SACODECO**











# Al haramain railway station

OHL ARABIA







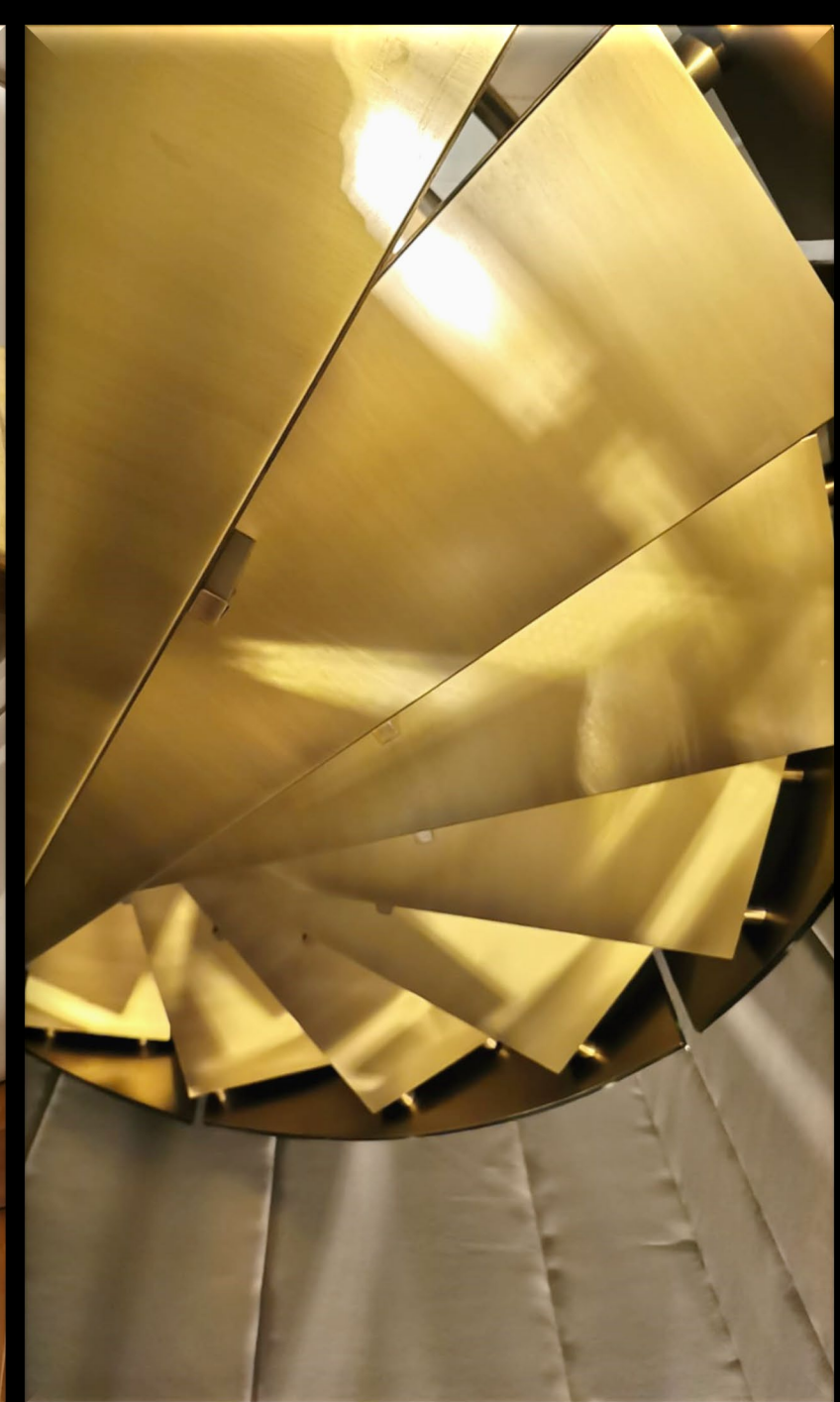






**Privet villa**















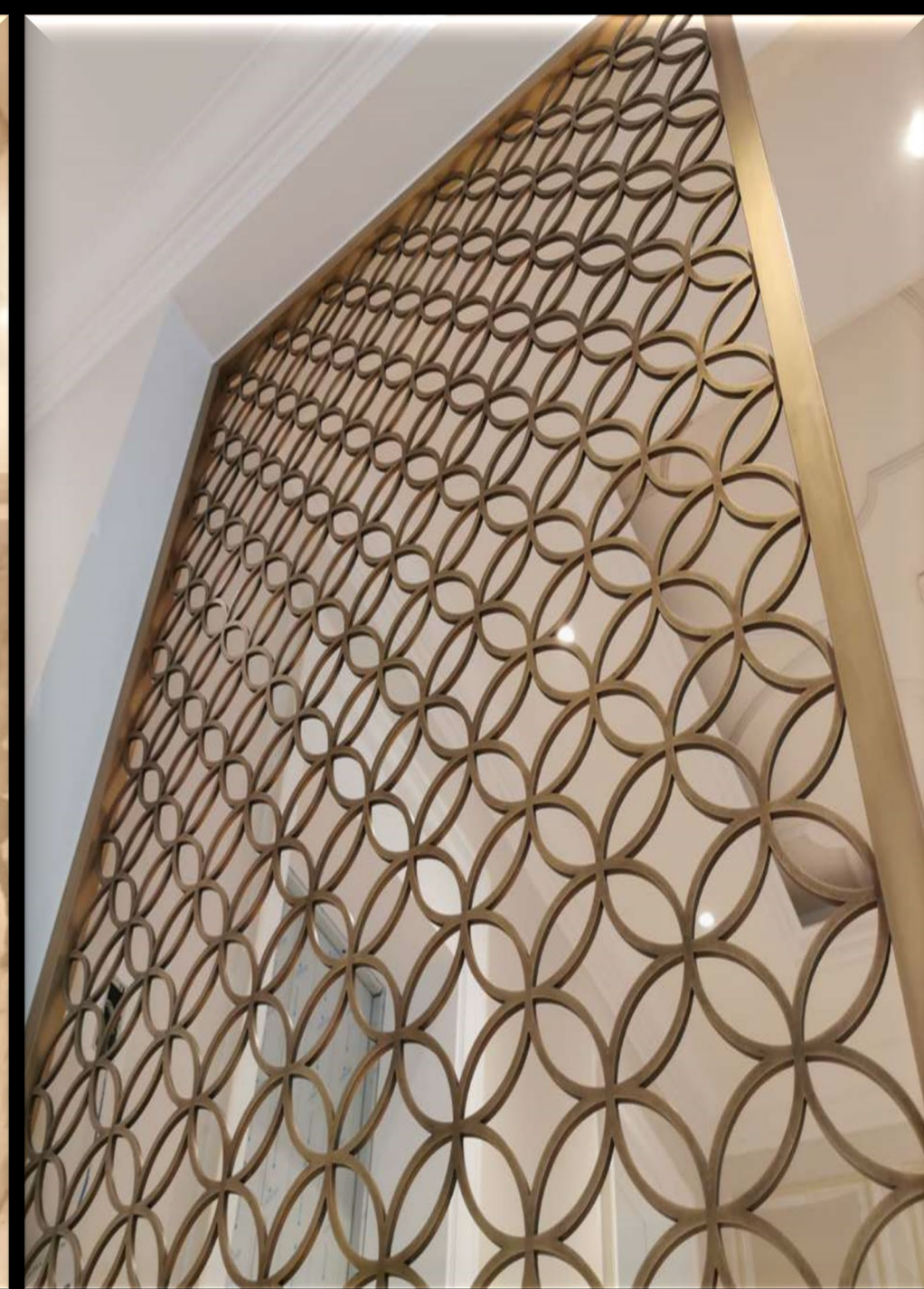




# Our Gallery

Executed for various companies













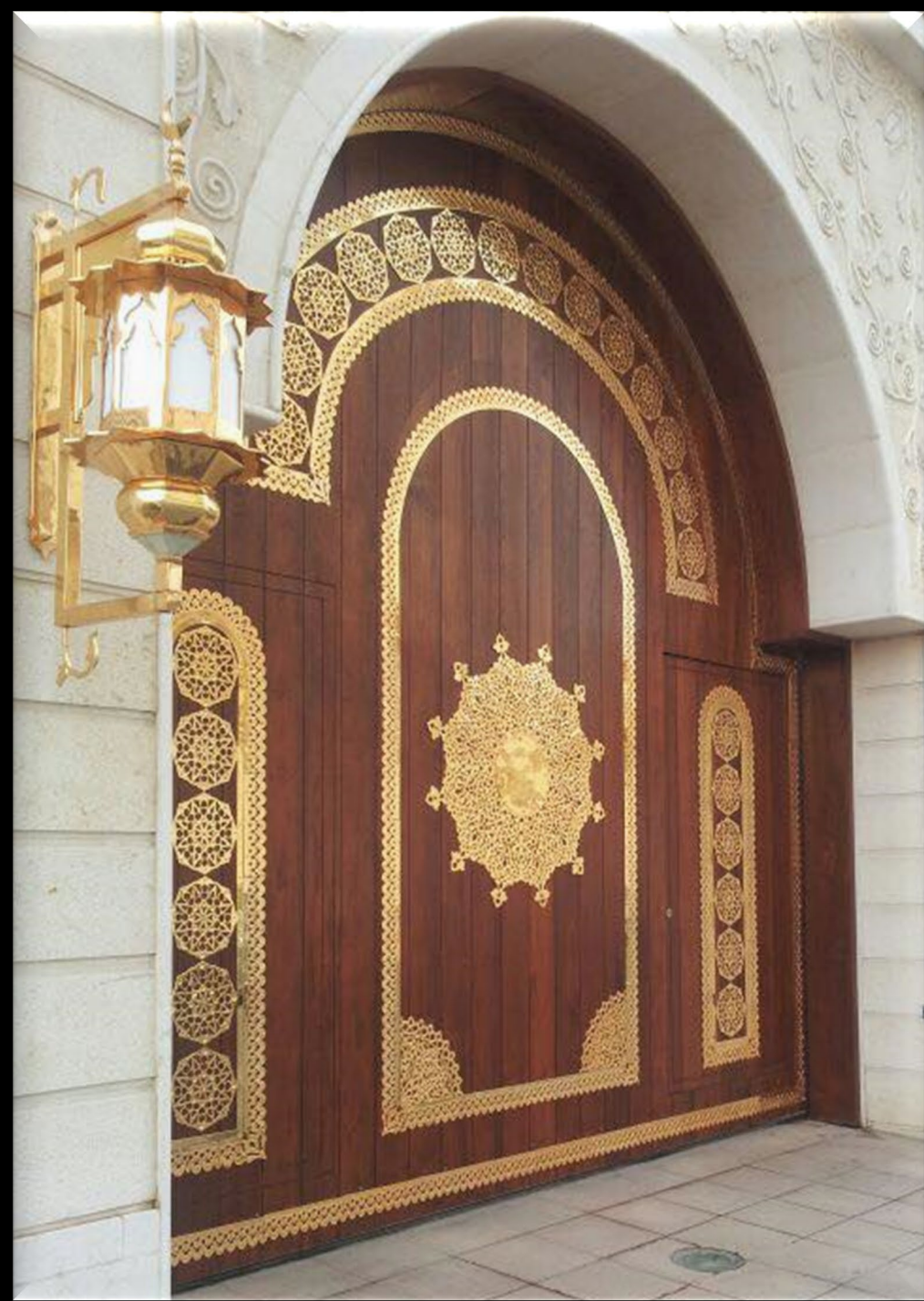




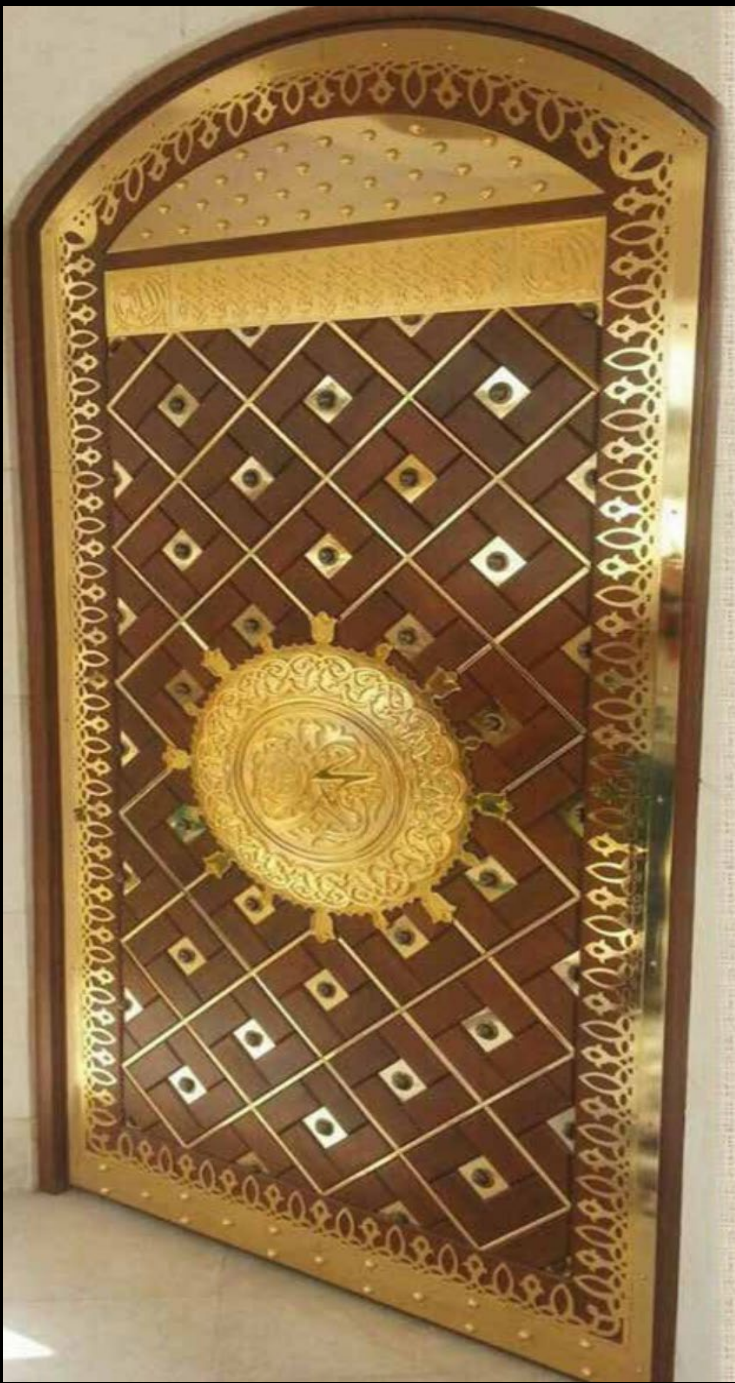




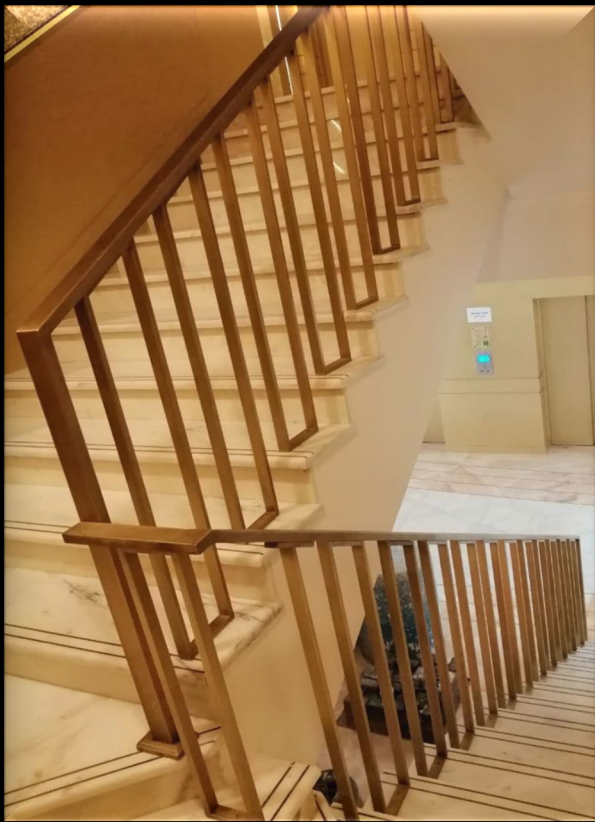






















**Jeddah Superdome**  
**Furniture and Interior Design**  
**2025**





METAL SHAPES COMPANY

Specialized in Metal Artwork - Electroplating





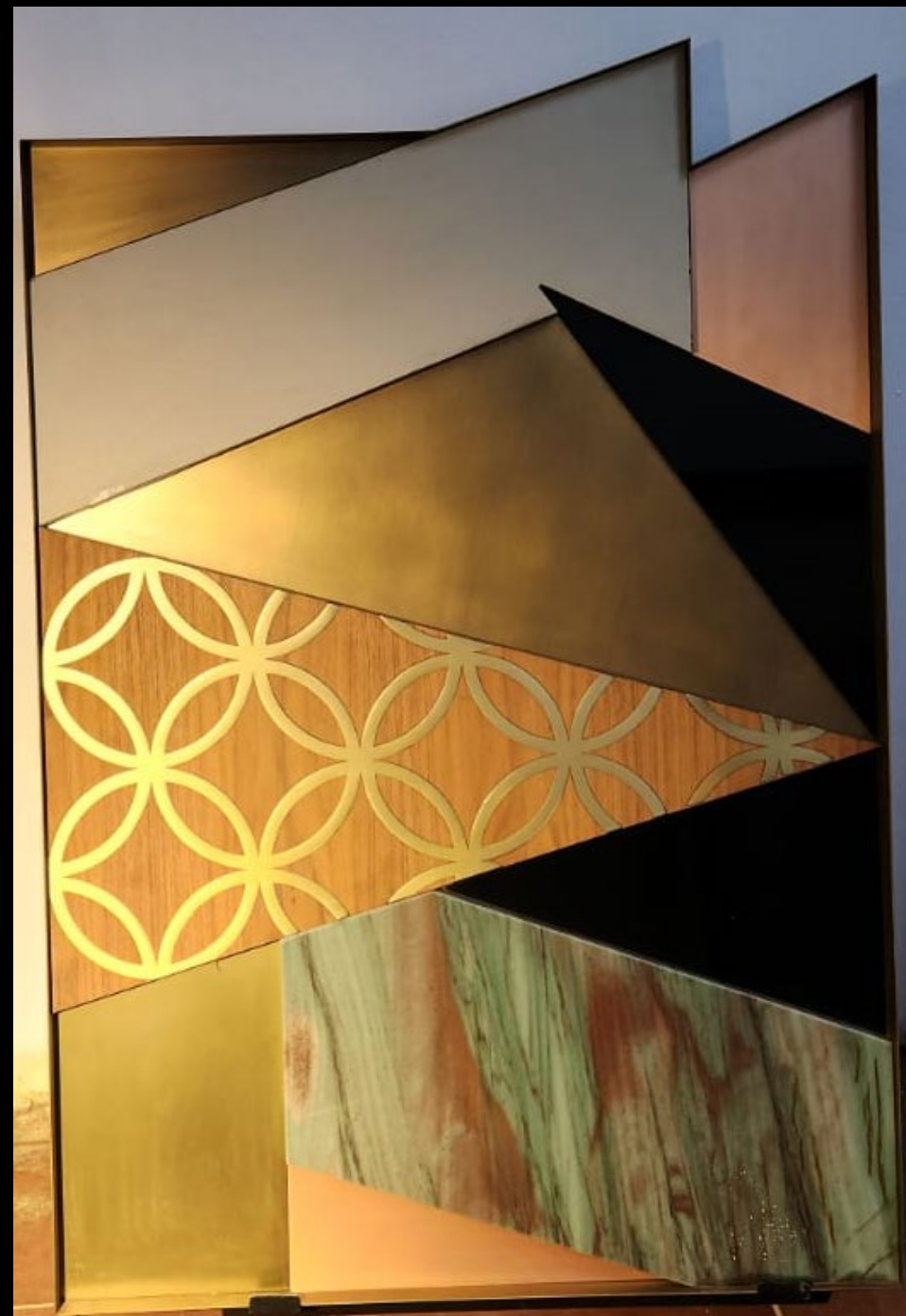
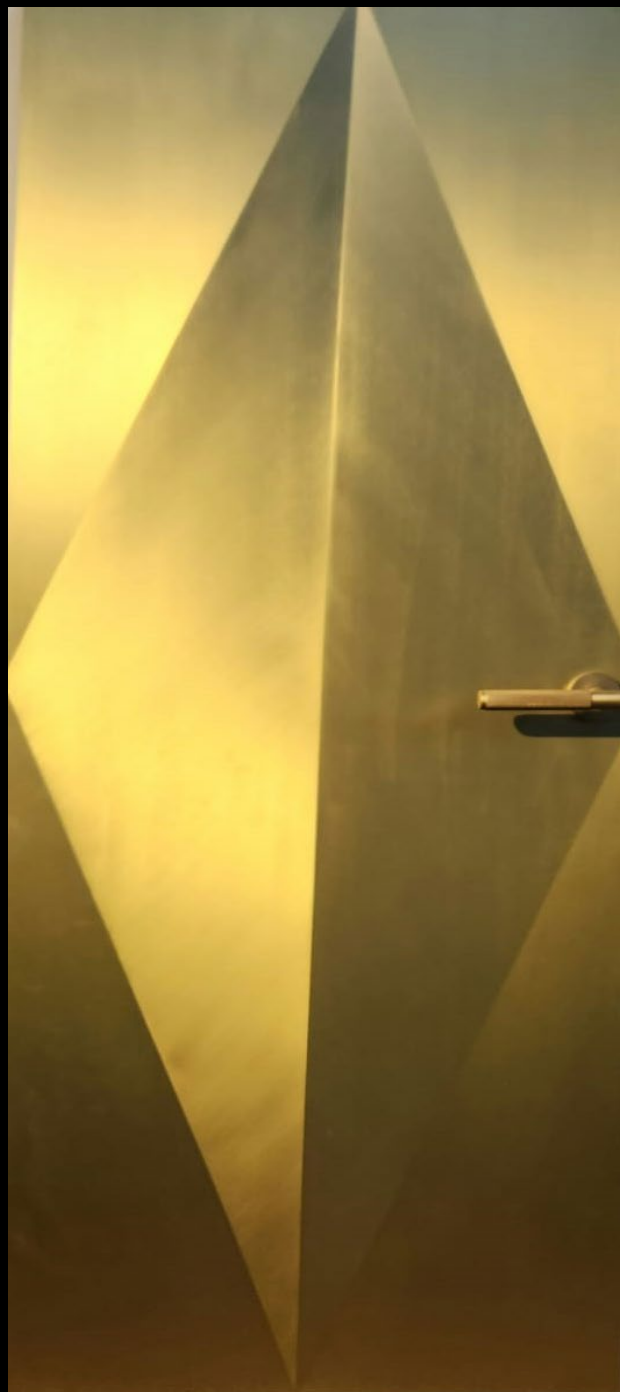


 METAL SHAPES COMPANY

Specialized in Metal Artwork – Electroplating – PVD Coating









**Index Riyadh 2023**

**Jibex 2024**







## قسم الطلاء الكهربائي للمعادن

قسم الطلاء الكهربائي للمعادن في شركة الأشكال المعدنية يتمتع بخبرة تمتد لأكثر من ٢٥ عامًا في تقديم حلول الطلاء عالية الجودة. نعتمد على أحدث التقنيات لضمان حماية فائقة ولمسات فنية مثالية تناسب مختلف التطبيقات والتصاميم. نقتنا مبنية على الجودة، الدقة، والالتزام بأعلى المعايير لتلبية احتياجات عملائنا بكفاءة واحترافية.

## Electroplating Department for Metals

The Electroplating Department at Metal Shapes Company has over 25 years of experience in providing high-quality coating solutions. We rely on the latest technologies to ensure superior protection and artistic finishes that suit various applications and designs. Our trust is built on quality, precision, and commitment to the highest standards to meet our clients' needs efficiently and professionally.

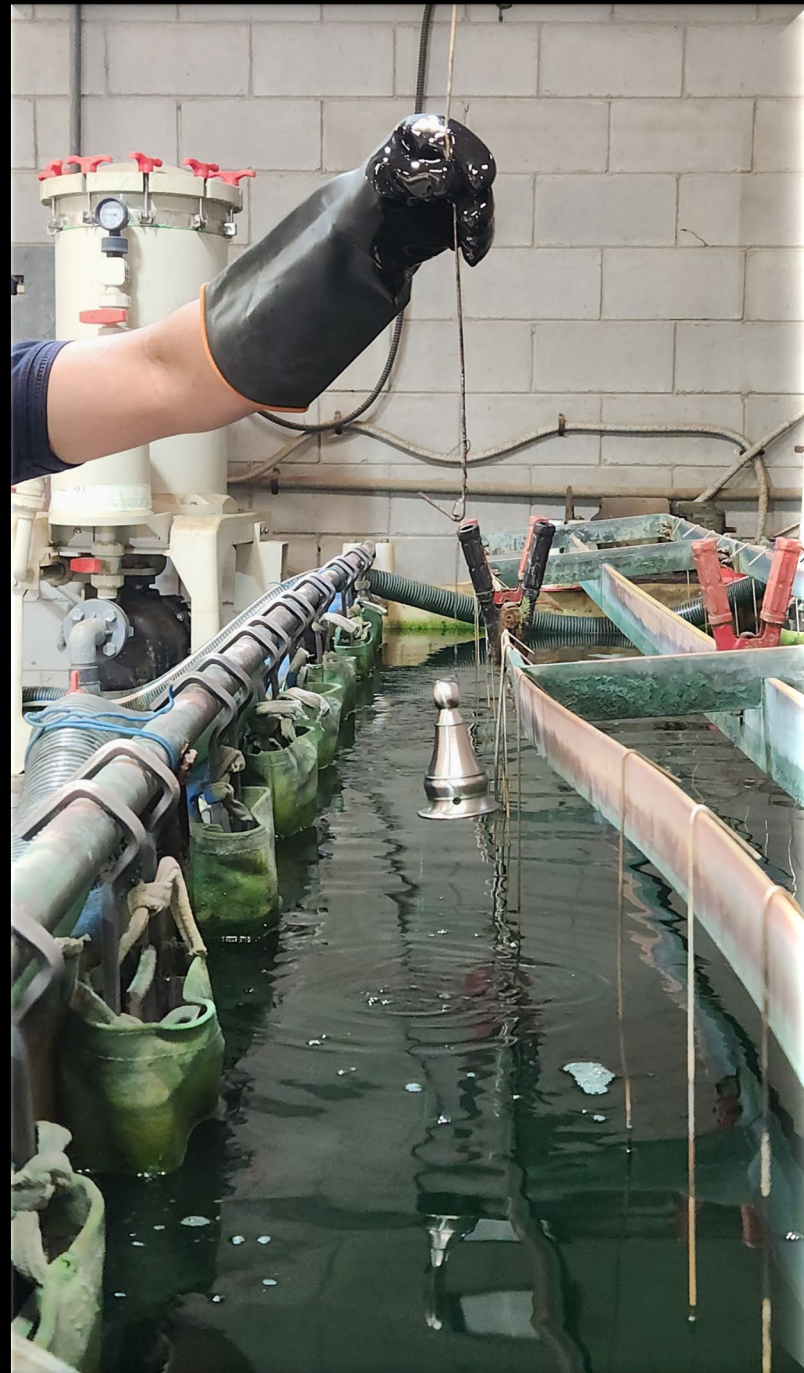














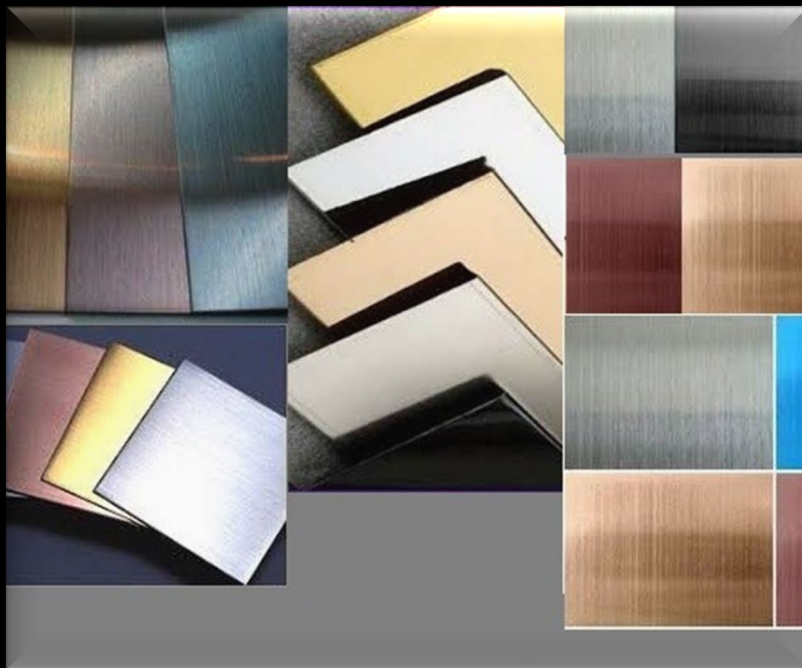
## قسم الطلاء PVD

يتميز قسم طلاء PVD في شركة الأشكال المعدنية بتقديم حلول طلاء متقدمة توفر متانة فائقة ولمسات جمالية راقية. نعتمد على أحدث تقنيات التبخر الفيزيائي للمعادن لضمان طلاء عالي الصلابة، مقاوم للتآكل، ومناسب لمختلف التطبيقات الصناعية والزخرفية. نلتزم بالجودة والدقة لتلبية تطلعات عملائنا بأعلى المعايير الاحترافية.

## PVD Coating – Where Technology Meets Luxury

The PVD Coating Department at Metal Shapes Company specializes in advanced coating solutions that provide exceptional durability and premium aesthetics. We utilize state-of-the-art Physical Vapor Deposition (PVD) technology to ensure a highly durable, corrosion-resistant finish suitable for various industrial and decorative applications. Our commitment to quality and precision guarantees that we meet our clients' expectations with the highest professional standards.















## Equipment & Machinery

- PVD machine
- Argone welding
- Cnc Bending machine
- Cnc router
- Rolling machine
- Cnc Router
- Sanding Machine
- Cnc Laser cut
- Laser weldeng

## قسم الفنون المعدنية

فن يجسد الإبداع... معدن يحكي قصة في شركة الاشكال المعدنية، نحول المعدن إلى تحف فنية تلبس بالحياة، حيث يلتقي الإبداع بالحرفية لتقديم أعمال تعكس الذوق الرفيع وتضفي لمسات استثنائية على المساحات. من القطع الفنية الفريدة إلى الحلول المبتكرة في طلاء المعادن، نقدم تصاميم تجمع بين الجمال، المتانة، والتفرد، نختار أرقى المواد ونعتمد أحدث التقنيات لضمان جودة لا تُضاهى، بينما يعمل فريقنا من المصممين المهرة بشغف وإبداع لتحويل الرؤى إلى واقع ملموس. التفاصيل الدقيقة، اللامسات الفنية، والانسائية في التصميم ليست مجرد عناصر في عملنا، بل هي فلسفة نعيشها في كل قطعة نصنعها، نحن لا نبيع منتجات، بل نقدم تجارب فنية تُروي قصصًا وتعكس شخصيات أصحابها، مائحين كل مساحة هويتها الخاصة ولمستها الجمالية الفريدة.

## Department of Metallurgical Arts

Art that embodies creativity... Metal that tells a story (Roboto)

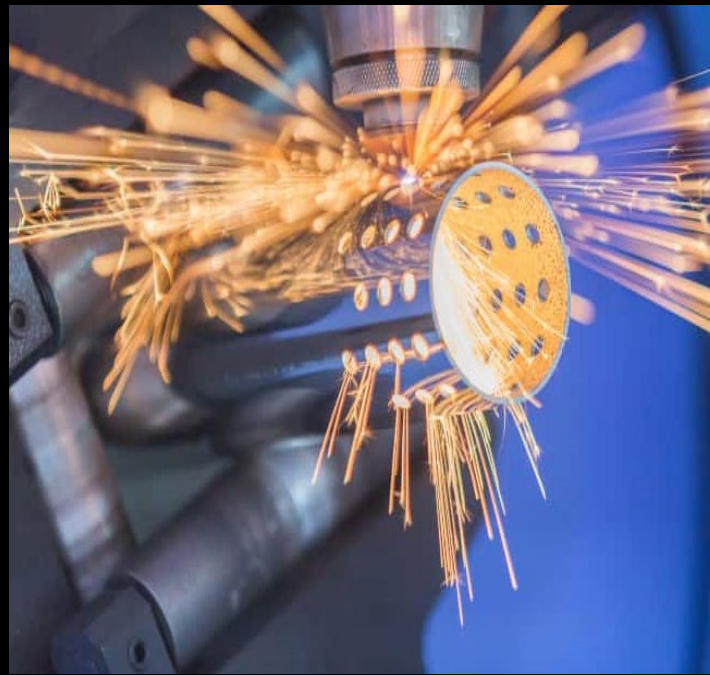
At Metal Shapes, we transform metal into works of art that come to life, where creativity meets craftsmanship to deliver pieces that reflect refined taste and add extraordinary touches to spaces. From unique art pieces to innovative metal coating solutions, we offer designs that blend beauty, durability, and individuality.

We select the finest materials and rely on the latest technologies to ensure unmatched quality, while our team of skilled designers works with passion and creativity to turn visions into tangible reality. The intricate details, artistic touches, and fluidity in design are not just elements in our work; they are a philosophy we live by in every piece we create. We don't sell products; we offer artistic experiences that tell stories and reflect the personalities of their owners, giving each space its own identity and unique aesthetic touch.









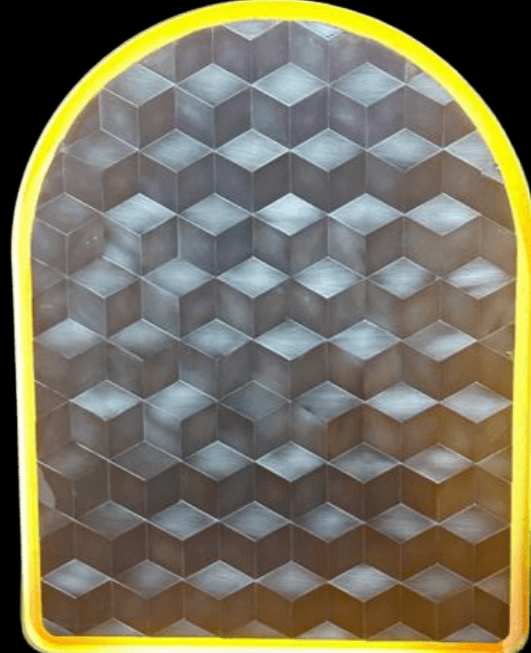
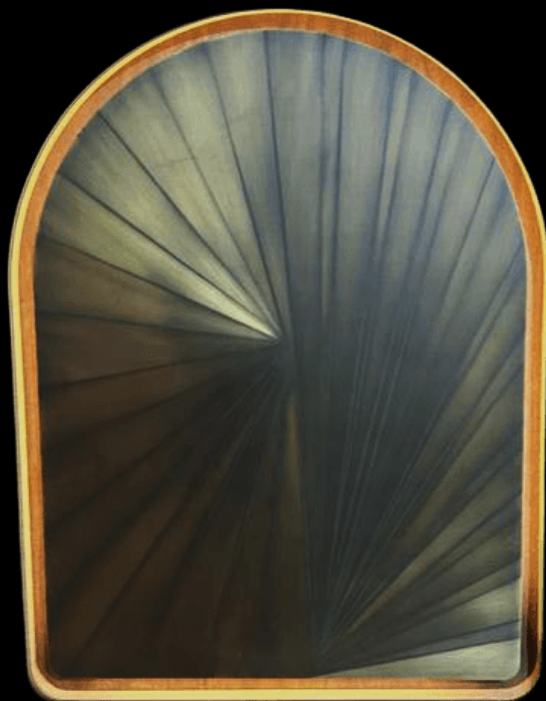






**Models from Our Participation in INDEX, The Big 5  
and Jeddah International Exhibition**





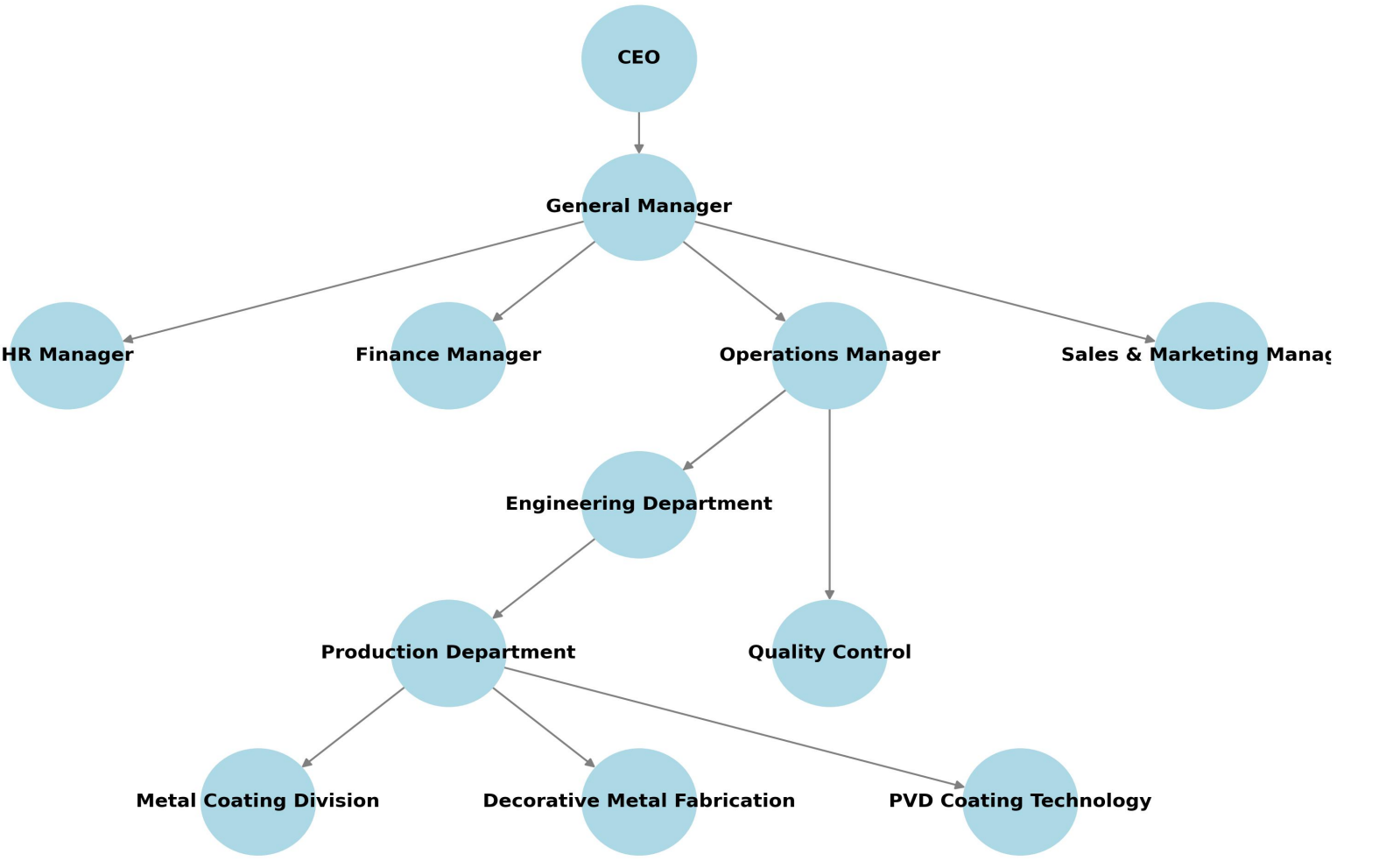
















## **Health and Safety Policy**

**Advanced Metal Shapes Co.** is committed to delivering high-quality metal products while ensuring a safe and healthy working environment. Recognizing the importance of health and safety responsibilities, the company maintains a **comprehensive Health and Safety Management System** to minimize hazards associated with its operations, activities, and services, in full compliance with **OHSAS 18001:2007** requirements.

Within the framework of **Advanced Metal Shapes Co.'s Health & Safety Management System**, **Advanced Metal Shapes Co.** is committed to the following principles:

- **Preventing injuries and ill health** by proactively identifying and mitigating risks.
- **Empowering employees** with the authority to halt work if a hazard presents an unacceptable risk to their safety or the safety of others.
- **Consulting, communicating, and engaging openly** with customers, employees, neighbors, public interest groups, and all stakeholders involved with **Advanced Metal Shapes Co.**
- **Developing and maintaining a strong safety culture**, ensuring all individuals are aware of potential hazards related to their activities.
- **Continuously improving** the Health & Safety Management System to enhance its effectiveness in achieving safety objectives.
- **Providing comprehensive training** to all staff on health and safety responsibilities while ensuring that employees, contractors, and visitors are competent and fully aware of safety requirements.
- **Collaborating with partners, suppliers, competitors, and regulators** to enhance industry standards and improve the quality and safety of **Advanced Metal Shapes Co.'s** services and products.
- **Ensuring full compliance** with all legal and regulatory requirements related to occupational health and safety hazards.

**Advanced Metal Shapes Co.** will periodically review and implement this policy, reaffirming its commitment to providing **safe, high-quality services and products**. This policy is publicly available and serves to inspire confidence in our collective ability to uphold the highest health and safety standards.





## Quality Policy

**Advanced Metal Shapes Co.** is committed to delivering **professional, high-quality metal products**. To achieve this, management and quality experts define the company's quality objectives, establish acceptable quality standards, and assign responsibilities to each department to ensure compliance. This commitment is realized through the following business operations:

- **Design, engineering, and fabrication of decorative metals**
- **Metal coating and finishing**

We **strictly comply** with **ISO 9001:2018** as our quality management system and, where required, adhere to **SASO and ASTM engineering codes and standards** to ensure **customer satisfaction**. Additionally, we effectively communicate the company's quality objectives and expectations across all departments to maintain high-quality standards.

To continuously enhance our **engineering designs and products**, we utilize **modern technologies** to improve our operational management system.

Management **monitors key performance indicators** for each business operation **every six months**, reviewing quality effectiveness to ensure the **consistent application of quality standards** through a process of **continuous improvement**.





# QUALITY AND SAFETY MANUAL

QSM



## ***SECTION ONE***

### **THE COMPANY PROFILE**

**Advanced Metal Shapes Co.** is a leading company in **metal decoration manufacturing, metal arts, and metal coating** in Saudi Arabia, established in **2000**. The company specializes in providing **comprehensive metal solutions**, including design, manufacturing, forming, and coating, using the latest technologies to ensure **the highest standards of quality and durability**.

#### **Artistic Metal Decoration Division**

This division is one of the **core pillars** of Advanced Metal Shapes Co., combining **artistic creativity with advanced engineering techniques** to design and manufacture **high-end metal decorations** that meet the demands of architectural, commercial, and residential projects. The division excels in **executing intricate artistic details**, from complex metal engravings to modern designs, using **state-of-the-art laser cutting, advanced welding, and high-precision finishing techniques**.

We collaborate with **engineers and designers** to ensure that **clients' visions** are brought to life with **exceptional quality**. Our focus on **high-performance materials** guarantees **durability and sustainability**, making us the ideal choice for those seeking **unique and distinguished metal designs**.

#### **Metal Coating Division**

With over **20 years of experience**, the company is recognized for its **European-standard efficiency and excellence** in **electrostatic coating for all types of metals**. We use only **high-quality raw materials** to ensure **long-lasting protection and superior finishing** against **corrosion and environmental factors**. To further enhance durability, we apply **an additional protective paint layer** using **specialized ovens** at temperatures reaching **250°C**.

#### **Physical Vapor Deposition (PVD) Technology**

**PVD coating technology** is one of the advanced solutions offered by the company, providing a **durable and high-performance protective layer** that enhances **corrosion resistance and aesthetic appeal** while being environmentally friendly.

#### **Commitment to Quality and Innovation**

Through **high-quality standards, precision manufacturing, and timely delivery**, **Advanced Metal Shapes Co.** continues to strengthen its position as a **leading choice in advanced metal decorations**. The company remains committed to delivering **innovative products and solutions that meet the highest international standards**.



## SECTION TOW

### SCOPE AND EXCLUSIONS

#### 2.1 SCOPE OF APPLICATION

This manual provides a **comprehensive overview** of the **Quality, Health, and Safety Management System** implemented at **Advanced Metal Shapes Co.** The system is designed to meet the requirements of **ISO 9001:2008** and **OHSAS 18001:2007** and applies to the following areas:

- **Design, engineering, and fabrication of decorative metals**
- **Metal coating**

#### 2.2 EXCLUSIONS

Certain requirements of **ISO 9001:2008** may be excluded under the following conditions:

- When specific requirements cannot be applied due to the nature of **Advanced Metal Shapes Co.** and its **services or products**.
- These exclusions are limited to requirements within **Clause 7** of the standard.
- Such exclusions do not impact the company's ability or responsibility to provide **services that meet customer needs and comply with applicable regulatory requirements**.
- The **CEO** and the **Management Representative (MR)** are responsible for identifying any **ISO 9001:2008** requirements that cannot be applied and may be considered for exclusion.
- As a result, **there are no exclusions currently applicable**.



## **SECTION THREE**

### **QH&S MANAGEMENT SYSTEM OVERVIEW**

#### **3.1 GENERAL REQUIREMENTS**

Advanced Metal Shapes Co. has established, documented, implemented, and maintained a Quality, Health, and Safety (QH&S) Management System to meet the requirements of ISO 9001:2008 and OHSAS 18001:2007. The documentation list (Appendix A) outlines the overall QH&S MS documentation. The sequence and interaction of these processes are determined as per the interaction between processes outlined in Appendix B.

The effective implementation of the QH&S Management System is monitored, measured, analyzed, and verified through regular reviews and audits. These reviews compare current practices against the requirements of the written documents. Where necessary, resources are provided, and corrective/preventive actions are taken, followed by a review of their effectiveness.

#### **3.2 QH&S MS DOCUMENTATION**

The need for new documents (manuals, procedures, etc.) is determined by the complexity of the processes and the competence of the personnel involved in carrying out the activities.

#### **3.3 MANAGEMENT COMMITMENT**

Advanced Metal Shapes Co.'s top management is committed to the QH&S Management System and continually improves its effectiveness, as evidenced by:

- Communicating the importance of meeting customer, statutory, and regulatory requirements.
- Establishing Advanced Metal Shapes Co.'s Quality Policy and Safety Policy.
- Ensuring that Quality and Safety Objectives are established.
- Conducting management reviews.
- Ensuring the availability of resources.



### **3.4 RESOURCES, ROLES, RESPONSIBILITY, ACCOUNTABILITY, AND AUTHORITY**

Advanced Metal Shapes Co. ensures that the necessary resources are provided to implement, maintain, and continually improve the QH&S Management System, as well as to enhance customer satisfaction.

Personnel at Advanced Metal Shapes Co. are competent based on appropriate education, training, skills, and experience. The Job Description Manual identifies the required education, training, skills, and experience for each role according to the organization chart.

The details of the QH&S Management System are documented, with each element, including responsibilities, authorities, and the interrelation of functional roles, defined and effectively communicated to all involved parties.

The Quality Assurance Manager has been appointed as the Management Representative (MR) and has the authority and responsibility to ensure the following:

- The QH&S Management System is established, implemented, maintained, and complies with ISO 9001:2008 and OHSAS 18001:2007 requirements.
- Liaising with external parties on matters relating to the QH&S MS.
- Reporting to top management on the performance of the QH&S MS and any need for improvement.
- Promoting awareness of customer requirements throughout Advanced Metal Shapes Co.
- Promoting awareness of applicable legal and other requirements.
- Ensuring that the objectives and targets of the QH&S Management System program are met.

In addition, Advanced Metal Shapes Co. has formed a Health and Safety Committee comprising managers and representatives from various departments to oversee safety matters within the company.



### **3.5 COMMUNICATIONS AND CONSULTATION**

Advanced Metal Shapes Co. management ensures effective communication channels between various levels and functions regarding the processes of the QH&S Management System and its effectiveness. Employees have access to relevant information through the company's LAN and other communication facilities.

Additionally, Advanced Metal Shapes Co. communicates externally about its OH&S hazards and applicable legal and other requirements.

### **3.6 MANAGEMENT REVIEW**

Advanced Metal Shapes Co.'s top management reviews the QH&S Management System to ensure its continuing suitability, adequacy, and effectiveness in meeting ISO 9001:2008 and OHSAS 18001:2007 requirements. This review includes assessing opportunities for improvement and the need for changes to the QH&S Management System.

The review also considers current performance and improvement opportunities related to audit results, the status of preventive and corrective actions, customer feedback, process performance, incident investigations, and the extent to which Quality and OH&S objectives and targets have been met. Other agenda items include service conformity, follow-up from previous meetings, changes affecting the QH&S Management System, and recommendations for improvement.

All quality and safety matters are formal agenda items in the management review. The results of the review, including all actions arising, are recorded. Each identified action has clear timelines and resource allocations, including personnel.

### **3.7 HAZARD IDENTIFICATION AND RISK ASSESSMENT**

Advanced Metal Shapes Co. applies a process of hazard identification and risk assessment to determine the necessary controls to reduce the risks of injury and ill health. The purpose of this process is to understand hazards that may arise during company activities and ensure that risks to personnel are assessed, prioritized, and controlled to a level acceptable to Advanced Metal Shapes Co. management.



### **3.8 QUALITY AND SAFETY OBJECTIVES, TARGETS, AND PROGRAM**

A procedure is in place to establish objectives, targets, and programs consistent with Advanced Metal Shapes Co.'s policies. Key elements of this procedure include:

- Establishing Quality and Safety Objectives and Targets.
- Defining the management program.
- Monitoring the achievement of goals.

Advanced Metal Shapes Co. aims to achieve the following general objectives:

- Increasing customer satisfaction.
- Improving service quality.
- Preventing injury and ill health related to service processes.

### **3.9 LEGAL AND OTHER REQUIREMENTS**

Advanced Metal Shapes Co. establishes and maintains documented procedures to identify and access legal and other requirements. These procedures ensure compliance with relevant laws and identify how these requirements apply to the company's hazards.

### **3.10 CONTROL OF NON-CONFORMITIES**

Advanced Metal Shapes Co. ensures that any product or service that does not conform to requirements is identified and controlled to prevent unintended use or delivery. Controls, responsibilities, and authorities for dealing with non-conforming services are defined. The company conducts checks and technical reviews to identify and eliminate non-conformities. Corrected non-conforming products or services are subject to re-verification.

Additionally, any non-conformity related to safety matters is defined, and the necessary corrective/preventive actions are taken.



### **3.11 PURCHASING**

Advanced Metal Shapes Co. ensures that purchased products or services conform to specified requirements. Suppliers are selected, evaluated, and re-evaluated based on their ability to meet the company's requirements. Verification of purchased products or services depends on the purchasing information to ensure compliance with specified requirements.

### **3.12 INTERNAL AUDITS**

Advanced Metal Shapes Co. conducts internal audits at planned intervals to determine whether the QH&S Management System conforms to planned arrangements and is effectively implemented and maintained.

Internal audits are planned considering the status and importance of the processes and areas to be audited, as well as the results of previous audits. Audit criteria, scope, frequency, and methods are defined. Auditors are selected to ensure objectivity and impartiality, and they do not audit their own work. Responsibilities and requirements for planning, conducting audits, reporting results, and maintaining records are defined.

Management responsible for the audited area ensures that actions are taken without undue delay to eliminate detected non-conformities and their causes, and to respond to improvement opportunities. Follow-up activities include verifying the actions taken and reporting the results.

### **3.13 IMPROVEMENT**

The QH&S Management System is managed in a way that facilitates continual improvement. Information from audit results, data analysis, corrective and preventive actions, and management reviews is utilized to drive the improvement process.

Data indicating the suitability and performance of the QH&S Management System is collected, collated, and analyzed. Where changes to the system offer opportunities for improvement, these changes are implemented. Key areas of focus include customer satisfaction, conformance to service requirements, characteristics and trends of processes and services, opportunities for preventive action, and supplier performance.



Advanced Metal Shapes Co. monitors information related to customer perceptions to determine whether the company has met customer requirements. Based on the analysis of customer satisfaction data, appropriate actions are taken to ensure customers are satisfied with Advanced Metal Shapes Co.'s services.

Corrective actions are implemented to eliminate the causes of non-conformities and prevent their recurrence. This process is documented and includes requirements for identifying non-conformities (including customer complaints), determining their root causes, and implementing actions. The results of these actions are recorded and reviewed to ensure satisfactory completion. If actions are not progressing in a timely manner or are found to be ineffective, further actions are specified and expedited.

Advanced Metal Shapes Co. also determines preventive actions to eliminate potential non-conformities and prevent their occurrence. The results of such actions are recorded and reviewed for effectiveness.





# EUROPEAN ACCREDITATION COUNCIL CERTIFICATE OF ACCREDITATION

*WE ARE PLEASED TO ANNOUNCE THE MANAGEMENT SYSTEM*



## ADVANCED METAL SHAPES COMPANY

*Building No 6945, Abu Bakr Al Siddiq St, Ash Sharafiyah Dist, Po 23216,  
JEDDAH, Kingdom of Saudi Arabia*

*In Recognition Of Successfully Implementing Best Partices In  
Management Systems That Meets With The Criteria Of*

## ORGANIZATIONAL EXCELLENCE MODEL EUROPEAN ACCREDITATION COUNCIL (EUAC)

*This certification acknowledges the participant's competence in*

*Providing Decoration Works Related to Interior and Exterior  
Finishing, Installation Services*



Certificate No : EU2133

Approval Date : 18.03.2025

Valid Period : 17.03.2026

Re-certification Date : 19.03.2028

*SCAN QR CODE TO VERIFY*



RUE DU TRÔNE 100, 3RD FLOOR, BRUSSELS 1050, BELGIUM



EMAIL : [INFO@EUROPEAN-ACCREDITATION.CO](mailto:INFO@EUROPEAN-ACCREDITATION.CO)



[WWW.EUROPEAN-ACCREDITATION.CO](http://WWW.EUROPEAN-ACCREDITATION.CO)



PHONE : +32 480205443





# CERTIFICATE



## ADVANCED METAL SHAPES COMPANY

Building No 6945, Abu Bakr Al Siddiq St, Ash Sharafiyah Dist, Po 23216,  
JEDDAH, Kingdom of Saudi Arabia

HAS BEEN ASSESED AND ACCREDITED IN ACCORDANCE WITH THE STANDARD OF

**ISO 9001:2015**

**QUALITY MANAGEMENT SYSTEMS**

THIS CERTIFICATE IS VALID FOR THE FOLLOWING SCOPE

**Providing Decoration Works Related to Interior and Exterior  
Finishing, Installation Services**



CERT NO.: :AMER25536  
Original Issue Date.: 18/03/2025  
Issue Date.: 18/03/2025  
Survillance/Expir Date.: 17/03/2026  
Recertificate Date .: 17/03/2028

**Americo Quality Standards Registech Private limited**  
**USA OFFICE: 1910 Thomes Ave, Cheyenne, WY 82001, USA**





# CERTIFICATE



## ADVANCED METAL SHAPES COMPANY

Building No 6945, Abu Bakr Al Siddiq St, Ash Sharafiyah Dist, Po 23216,  
JEDDAH, Kingdom of Saudi Arabia

HAS BEEN ASSESED AND ACCREDITED IN ACCORDANCE WITH THE STANDARD OF

**ISO 14001:2015**

**ENVIRONMENTAL MANAGEMENT SYSTEMS**

THIS CERTIFICATE IS VALID FOR THE FOLLOWING SCOPE

**Providing Decoration Works Related to Interior and Exterior  
Finishing, Installation Services**



CERT NO.: :AMER25537  
Original Issue Date.: 18/03/2025  
Issue Date.: 18/03/2025  
Survillance/Expir Date.: 17/03/2026  
Recertificate Date .: 17/03/2028

**Americo Quality Standards Registech Private limited**  
**USA OFFICE: 1910 Thomes Ave, Cheyenne, WY 82001, USA**





## ISO CERT INTERNATIONAL CERTIFICATE OF ACCREDITATION

WE ARE PLEASED TO ANNOUNCE THE MANAGEMENT SYSTEM OF



### **ADVANCED METAL SHAPES COMPANY**

Building No 6945, Abu Bakr Al Siddiq St, Ash Sharafiyah Dist, Po 23216,  
JEDDAH, Kingdom of Saudi Arabia

HAS BEEN ASSESSED AND ACCREDITED IN ACCORDANCE WITH THE STANDARD OF

**ISO 21500 : 2021**

**PROJECT, PROGRAMME AND PORTFOLIO MANAGEMENT SYSTEMS**

THIS CERTIFICATE IS VALID FOR THE FOLLOWING SCOPE  
Providing Decoration Works Related to Interior and Exterior  
Finishing, Installation Services

#### ISO CERT INTERNATIONAL LTD

KEMP HOUSE, 160 CITY ROAD, LONDON, UNITED KINGDOM  
WEB : [WWW.ISO-CERT.UK](http://WWW.ISO-CERT.UK) EMAIL: [IINFO@ISO-CERT.UK](mailto:IINFO@ISO-CERT.UK)



Accreditation Number: UK14233  
registration Date : 17/03/2025  
1st Surveillance Date : 16/03/2026  
2nd Surveillance Date: 16/03/2027  
Re-certification Date : 16/03/2028  
SCAN QR CODE TO VERIFY IT







# CERTIFICATE



## ADVANCED METAL SHAPES COMPANY

Building No 6945, Abu Bakr Al Siddiq St, Ash Sharafiyah Dist, Po 23216,  
JEDDAH, Kingdom of Saudi Arabia

HAS BEEN ASSESSED AND ACCREDITED IN ACCORDANCE WITH THE STANDARD OF

**ISO 45001:2018**

**OCCUPATIONAL HEALTH AND SAFETY MANAGEMENT SYTEMS**

THIS CERTIFICATE IS VALID FOR THE FOLLOWING SCOPE

**Providing Decoration Works Related to Interior and Exterior  
Finishing, Installation Services**



CERT NO.: :AMER25538  
Original Issue Date.: 18/03/2025  
Issue Date.: 18/03/2025  
Survillance/Expir Date.: 17/03/2026  
Recertificate Date .: 17/03/2028

**Americo Quality Standards Registech Private limited**  
**USA OFFICE: 1910 Thomes Ave, Cheyenne, WY 82001, USA**